

# Instructions for Using the Symbol P460 Phaser Terminal with Total Retail Solution Via USB Connection

## Installing the JMM P460 USB Transfer Software

- 1) Insert the “Symbol P460 PDT USB Transfer Program” CD into your CD-ROM Drive.
- 2) Follow the instructions on the screen to install the program. Accept all of the default selections.

## Taking Inventory With the Terminal

**Note:** Whenever these instructions tell you to press more than one key on the terminal, you are supposed to press them sequentially, not simultateously.

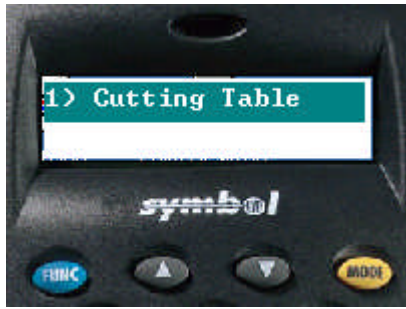
**For example:** If the instructions tell you to press “Func, \*”, it means to press the “Func” key once, release it, and then press the “\*” key once.

- 1) Wake up the terminal by squeezing the yellow trigger once.
- 2) If the terminal is **not** displaying the below copyright screen:



...then press “Func, \*” on the terminal to reset it. You will first see a screen saying “Symbol Technologies” on the first line, then after a couple seconds, you will see the above copyright screen. Press “ENTER” on the terminal to get to the main menu.

- 3) Next, you will see the following screen:



If you know that the terminal's data file is already blank, or you want to continue taking inventory where you left off last time, go ahead to step 4. If you need to clear the terminal's memory, continue with step 3a below:

3a) Press the down arrow button on the terminal 3 times to get to the menu option that says:



When you get to this screen, press the "ENTER" key on the terminal.

Hint: Instead of using the arrow keys to select the menu option, you can instead just press the "4" key to go directly to that menu option.

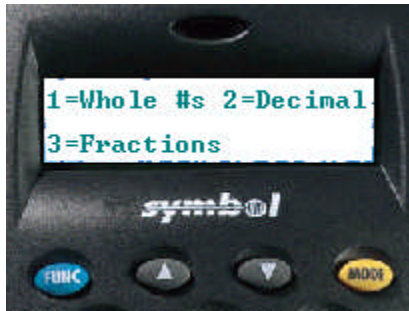
When asked to verify that you want to erase all data, answer yes by pressing "ENTER". When the data is erased, you will be taken back to the main menu.

4) Press the down arrow button on the terminal once to get to the menu option that says:



When you get to this screen, press "Enter" on the terminal.

5) Next, you will see the following screen:



You have three options here. For most individual non-cut items (not sold by the yard), you should press “1” to signify that you will be entering whole numbers only. If you are inventorying fabric or other cut goods, you should press either “2” or “3”, depending on whether you want to enter the fractional quantities as decimals (i.e. .25 for a quarter yard), or as fractions (i.e.  $\frac{1}{4}$  for a quarter yard). Make your selection by pressing the appropriate number on the terminal.

- 6) Now, you are ready to start taking inventory. For each item you inventory, you will see the following screen:



When you see this screen, you can scan a barcode. Do this by aiming the terminal at the barcode and squeezing the yellow trigger on the handle. (Note: Alternately, if the barcode contains numbers only, you can enter the number manually by typing it out with the number keys on the terminal, then pressing the “ENTER” key.)

- 7) After scanning (or entering) the barcode, you will be prompted to enter the quantity of that item that you have on hand. Depending on which option you chose in step 5, the screen will look different. Follow the appropriate step below (7a, 7b, or 7c), depending on the option that you chose:

7a) Whole Numbers Only



If you chose “Whole #s” in step 5, you will see the above screen. Simply enter the quantity and press the “Enter” key.

## 7b) Decimal



If you chose “Decimal” in step 5, you will see the above screen. First, enter the whole part of the number, then press ENTER, then enter the decimal part, then ENTER again. For example, to enter 5.125, you would press “5”, “ENTER”, “1”, “2”, “5”, “ENTER”. You do not need to enter the decimal point, as it is already entered for you. To enter a whole number (no fractional part), just leave the second part at the default of 0 and press ENTER again. For example to enter 12 with no fractional part, just press “1”, “2”, “ENTER”, “ENTER”.

## 7c) Fractions



If you chose “Fractions” in step 5, you will see the above screen. First, enter the whole part of the number, then press ENTER, then enter the numerator, then the denominator, then ENTER again. For example, to enter  $5 \frac{1}{4}$ , you would press “5”, “ENTER”, “1”, “4”, “ENTER”. To enter a whole number (no fractional part), just leave the second part at the default of 01 and press ENTER again. For example to enter 12 with no fractional part, just press “1”, “2”, “ENTER”, “ENTER”.

- 8) You will then be taken back to the “Item” screen (step 6), where you can scan or enter another barcode. Repeat steps 6 and 7 until you are done taking inventory.

Note 1: If you don’t scan anything or press any keys for a while, the terminal will go to sleep and the screen will go blank to conserve battery power. To wake it up, simply squeeze the trigger once and continue where you left off.

Note 2: While you’re not using the terminal, it’s a good idea to keep it in the cradle in order to keep the battery charged.

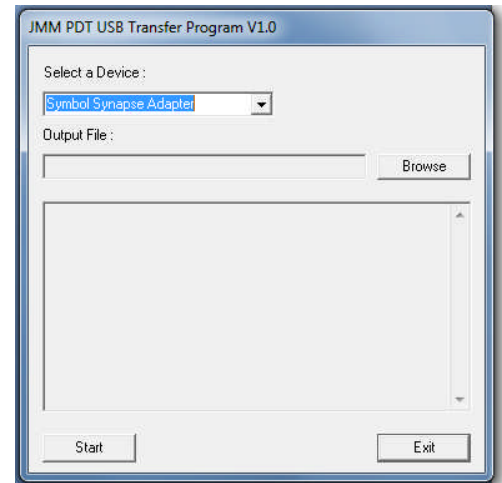
# Transferring the Inventory Data from the Terminal Into TRS

## Step 1: Transferring the Data File From the Terminal to the PC

- 1) Connect the cradle to the computer via the is connected to the PC with the USB data cable and connect the power, as follows:
  - a. Connect the 25-17821-20R (gray) data cable to the bottom of the cradle. The wide end of the cable must be connected to the “Com1” port on the bottom of the cradle. If the ports on the bottom of the cradle are not labeled, it is the CENTER port. (see photo at right)
  - b. Connect the round end of the power adapter to the round (right) port on the bottom of the cradle. (see photo at right)
  - c. Connect the other end of the 25-17821-20R (gray) data cable to the black STI-85-0200R USB adapter as shown. The round connector that hangs off the end of this connector should be connected to the side of the adapter as shown in the photo at right.
  - d. Connect the USB end of the black STI-85-0200R USB adapter to a USB port on your computer.

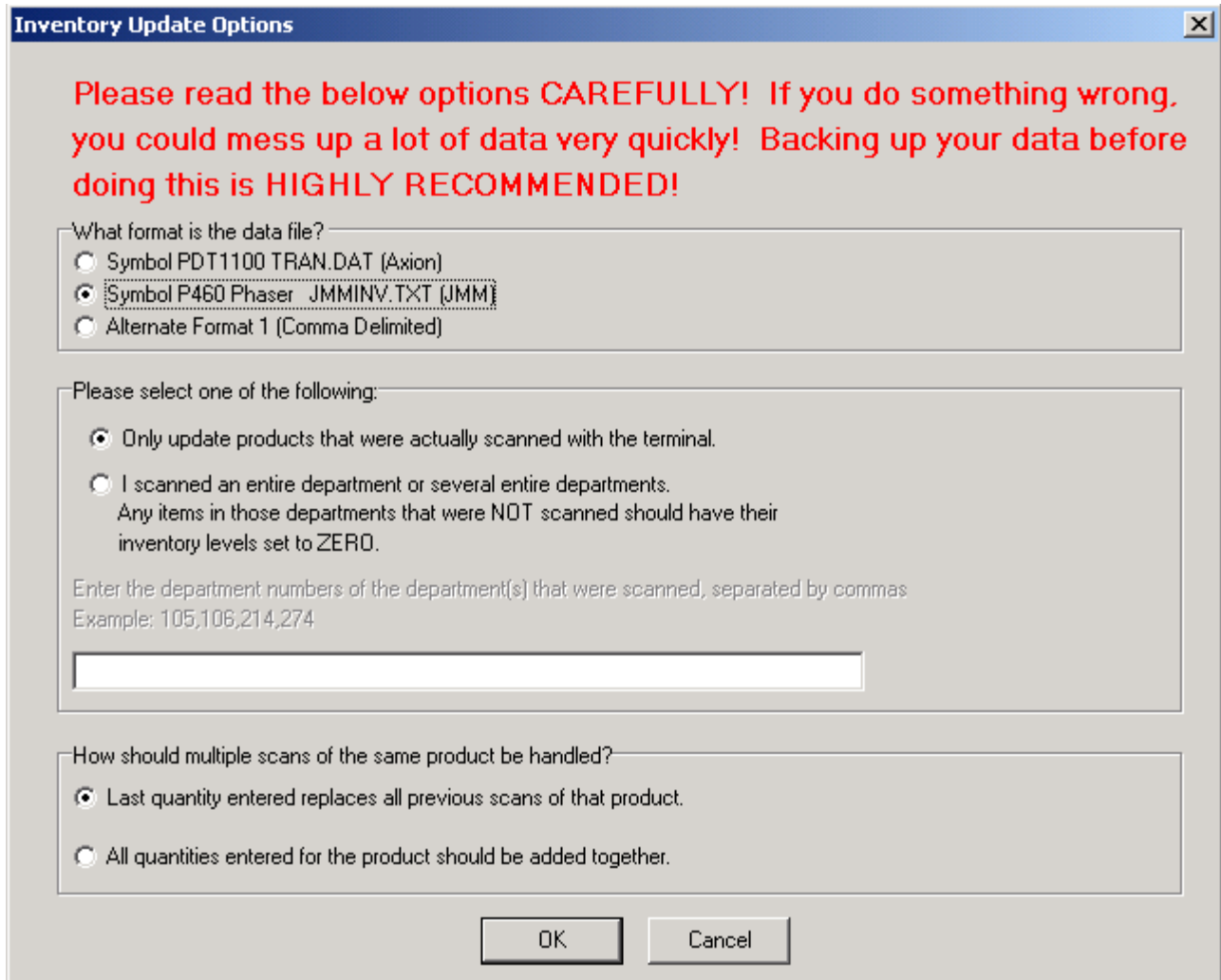


- 2) Connect the power line cord to the power adapter and to an electrical outlet.
- 3) Once everything is connected as outlined above, Start the USB Transfer Program by selecting Start->All Programs->JMM PDT USB Transfer->PDT Transfer Program. The first time you start the program, you may get a message that says, “USB Adapter Not Found”, even if you have the adapter connected. This is normal, and you can ignore this error. You should only get this message the first time, unless you really don’t have it connected.
- 4) Assuming you have the cables connected to the computer, you should see the following screen, as shown at the right. The “Select a Device” dropdown should say, “Symbol Synapse Adapter”. If it does not, select it from the dropdown.
- 5) Click the “Browse” button to choose a location to save the output file. Leave the file name as “JMMINV.TXT”.
- 6) If the terminal is asleep, wake it up by squeezing the yellow trigger once. Then, press “FUNC”, “\*” on the terminal. Press “ENTER” to go past the Copyright notice.
- 7) When you get to the main menu, press the down arrow until you get to the selection that says, “Send File USB”. Press “ENTER” to select this option.
- 8) The terminal will display the message “Put In Cradle THEN press Enter”. When you see that message, put the terminal in the cradle. **Do not press Enter yet.** Note: It is VERY important that the terminal is in the cradle and REMAINS THERE while you perform the rest of the steps below.





3) You will see the following screen:



**Inventory Update Options**

Please read the below options CAREFULLY! If you do something wrong, you could mess up a lot of data very quickly! Backing up your data before doing this is HIGHLY RECOMMENDED!

What format is the data file?

- Symbol PDT1100 TRAN.DAT (Axion)
- Symbol P460 Phaser JMMINV.TXT (JMM)
- Alternate Format 1 (Comma Delimited)

Please select one of the following:

- Only update products that were actually scanned with the terminal.
- I scanned an entire department or several entire departments. Any items in those departments that were NOT scanned should have their inventory levels set to ZERO.

Enter the department numbers of the department(s) that were scanned, separated by commas  
Example: 105,106,214,274

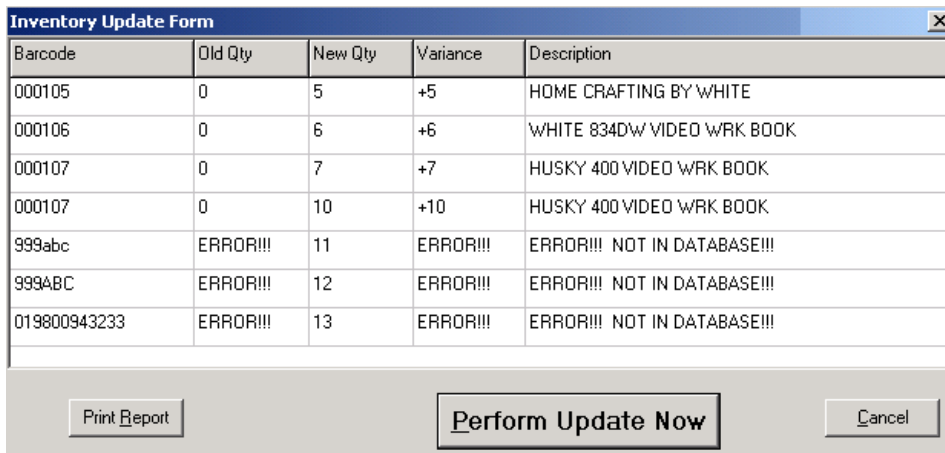
How should multiple scans of the same product be handled?

- Last quantity entered replaces all previous scans of that product.
- All quantities entered for the product should be added together.

OK Cancel

In the first box, select “Symbol P460 Phaser” if it’s not already selected. The other options are self explanatory. **Please read the warning about backing up your data!**

4) Next, you will see the following screen:



**Inventory Update Form**

Barcode	Old Qty	New Qty	Variance	Description
000105	0	5	+5	HOME CRAFTING BY WHITE
000106	0	6	+6	WHITE 834DW VIDEO WRK BOOK
000107	0	7	+7	HUSKY 400 VIDEO WRK BOOK
000107	0	10	+10	HUSKY 400 VIDEO WRK BOOK
999abc	ERROR!!!	11	ERROR!!!	ERROR!!! NOT IN DATABASE!!!
999ABC	ERROR!!!	12	ERROR!!!	ERROR!!! NOT IN DATABASE!!!
019800943233	ERROR!!!	13	ERROR!!!	ERROR!!! NOT IN DATABASE!!!

Print Report Perform Update Now Cancel

The above screen will appear with all of the products that you scanned with the terminal. At this point, you can review the data. If you need to modify any of the counts, you can do it directly from this screen by changing the values in the “New Qty” column. If any of the products come up with “ERROR!!!” (as shown in the last 3 products above), that means that you scanned a product that does not exist in your inventory database.

- 5) To print a variance report, click on the Print Report button. The report will come up in Netscape. You can print it from there with File->Print.
- 6) When you are satisfied with everything, click on the button labeled “Perform Update Now”. Your inventory values will be updated in the database.